

# CombiTac uniq High misalignment end pieces

**CombiTac**

EN



## HIGH MISALIGNMENT

# High misalignment end pieces CT-BE-...

The CombiTac high misalignment solution makes for radial and angular misalignment absorption during the connection process in docking applications. The pins on the male side serve as guiding pins, the female side has a conic shape. The guiding pins include insulation caps to prevent unintentional contact with live parts on the socket side.

### Features:

- Covers radial and angular misalignment up to  $\pm 4$  mm and  $\pm 2^\circ$ , respectively
- Up to 100,000 mating cycles
- Insulation security on the guiding pins to prevent unintentional contact with live parts on the socket side
- Suitable for all CombiTac uniq panel mount sizes

### Benefits:

- All-in-one solution
- Simplify the customer guiding system
- Added user safety
- Long-life solution
- Cost- and space-saving with a ready-to-use solution
- Added value: hybrid connector for power, signals, air and fluid

### Applications

CombiTac meets demanding technical specifications (multi-pole, high power, resistance to shock and vibrations) and offers a reliable long-life connector solution. Currently, customers combine CombiTac with their own guiding system in order to have higher radial and angular misalignment during the connection process.

With CombiTac high misalignment end pieces the customer simplifies this procedure, including an all-in-one solution: connector plus guiding system.

There are various industries where CombiTac high misalignment end pieces are needed, such as small AGVs, logistics, robotics, e-mobility, automotive, aerospace and food industry. Typical applications are automated docking/connection for battery swapping of logistic indoor vehicles, material handling and recharging robotic bases. Also, many industries require higher tolerance absorption for automatic connectors in e.g. production lines, testing applications, etc.



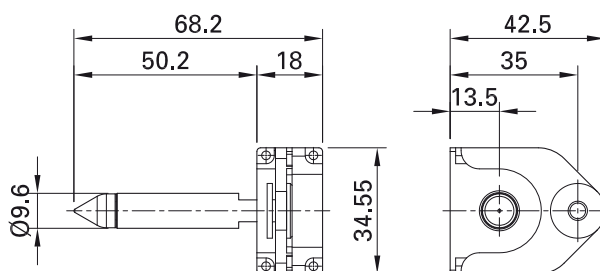
Assembly instructions MA213

[www.staubli.com/electrical](http://www.staubli.com/electrical)

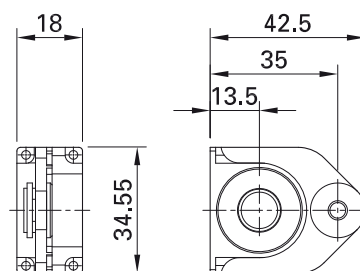
The end pieces are designed solely for the guiding of the connectors and the associated forces.

In a permanent installation application, the customer must provide a stable guide system, e.g. with mechanical pins.

CT-BE-S/4



CT-BE-B/4



Order No.	Type	Description
33.5727	CT-BE-S/4	Male part for panel mount
33.5726	CT-BE-B/4	Female part for panel mount

Technical data	
Misalignment absorption, radial	±4 mm
angular	±2°
Mating cycles	100,000
Material	Nickel-plated brass

For the selections of modules, please see  
CombiTac uniq main catalog and the configurator



CombiTac Configurator  
<https://configurator.combitac.com>



● Stäubli Units    ○ Representatives/Agents

# Global presence of the Stäubli Group

[www.staubli.com](http://www.staubli.com)