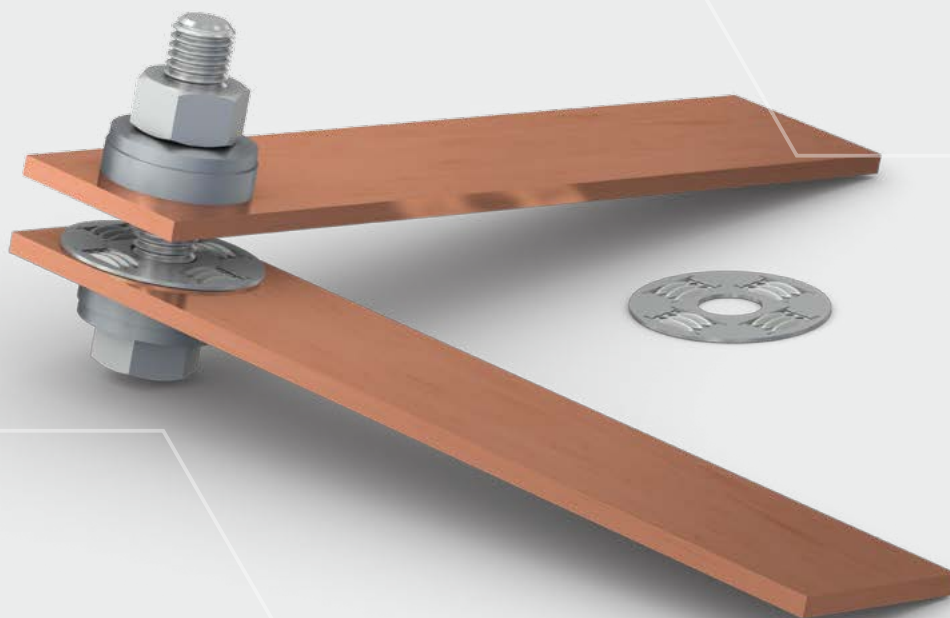


# Connecting element for busbars ElectroMate

MULTILAMTechnology | MULTILAM

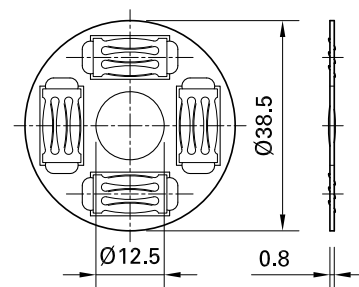
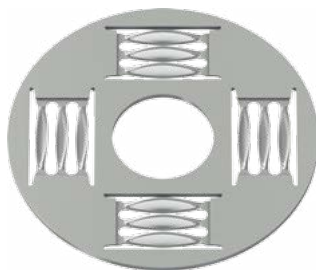


# ElectroMate

ElectroMate base plate, silver-plated  
with 4 MULTILAM

Thickness (installed) 0.8 mm

Thickness (across MULTILAMs) 1.3 mm



Order No.	Description	Dimensions $\varnothing o / \varnothing i$	Weight	MULTILAM Type	Continuous temperature	Rated current <sup>1)</sup>	Short-circuit current
		mm	g		°C	A	kA / 1s
71.1000	ElectroMate <sup>2)</sup>	38.5 / 12.5	4.5	LAIA, 4 x 3 Louvers	150	250 <sup>3)</sup> / 600 <sup>4)</sup>	5 <sup>3)</sup> / 10 <sup>4)</sup>

## Construction

In a round, silver plated brass disc, are 4 symmetrically distributed MULTILAM each with 3 louvers.

The proven MULTILAM<sup>®</sup> guarantees the best possible contact with a minimal contact resistance. The ElectroMate are mounted between busbars which are bolted together.

## Advantages

- For a better short and long-term contact between busbars
- Energy-saving
- Easy assembly

<sup>1)</sup> The relevant DIN-standards should be referred to, in particular the requirements of busbar current measurements.

<sup>2)</sup> Silver plated

<sup>3)</sup> Dynamic

<sup>4)</sup> Static

<sup>5)</sup> See catalog "MULTILAM Technical Overview"



Assembly instructions MA014

[www.staubli.com/electrical](http://www.staubli.com/electrical)

## RoHSready

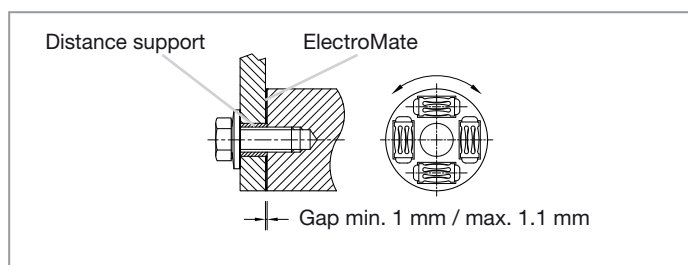
Directive 2002/95/EC on the restriction of the use of certain hazardous substances in electrical and electronic equipment

**Use**

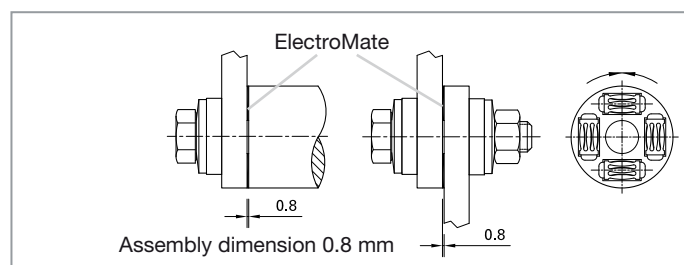
- for high current transmission with busbars by indoor installations
  - Rotary contact for the positioning of equipment parts e.g. pantograph isolator in h.v. applications
- III. 1: Rotary contact for the positioning of equipment parts, e.g. pantograph isolator in h.v. applications.

- For permanent connections between busbars
- III. 2: Stud torque 40 Nm (of screw M12, Mat. 8.8, lubricated)
- It is a contact element which can be used in straight, angled and "T"-bolted busbar systems (III. 3)

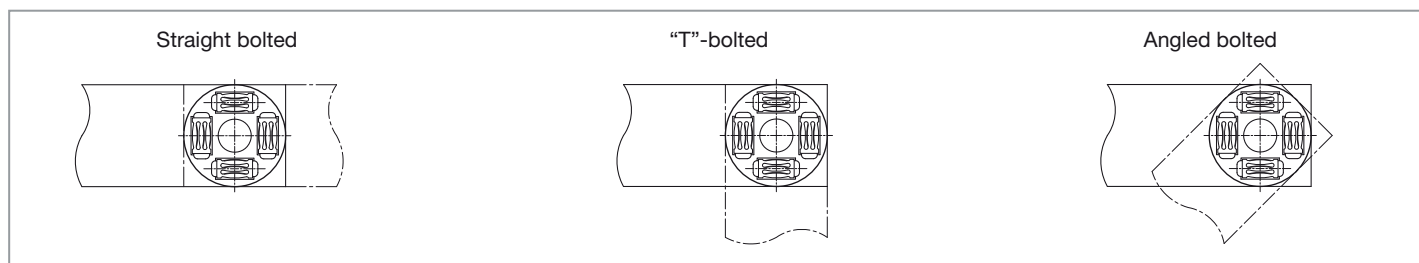
**III. 1 Dynamic use**



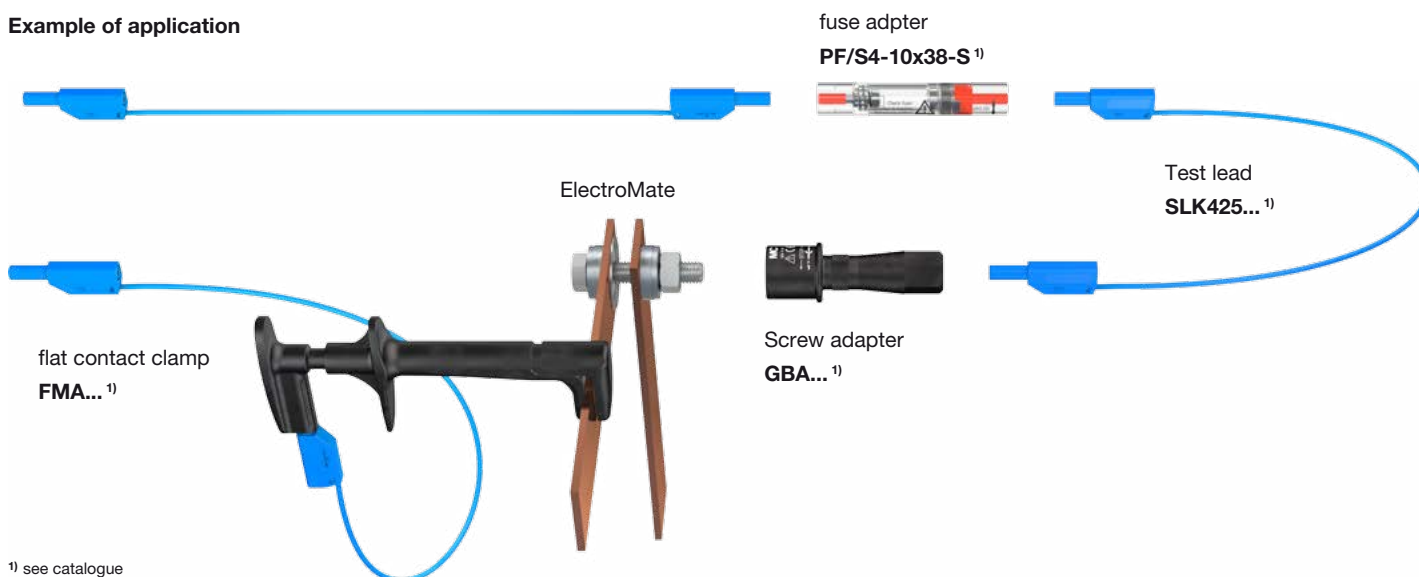
**III. 2 Static use**



**III. 3 Static use**



**Example of application**



<sup>1)</sup> see catalogue  
"Test accessories touch-protected"



■ Stäubli Units    ○ Agents

# Global presence of the Stäubli Group

[www.staubli.com](http://www.staubli.com)